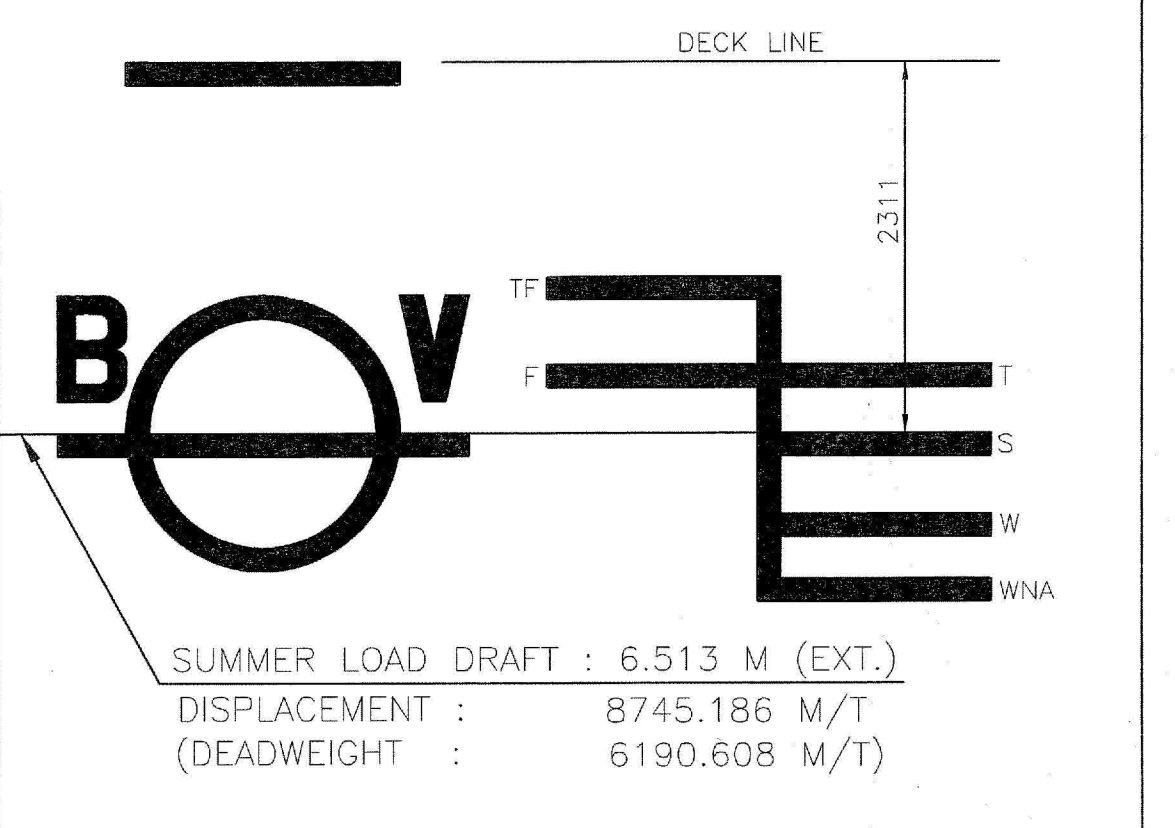
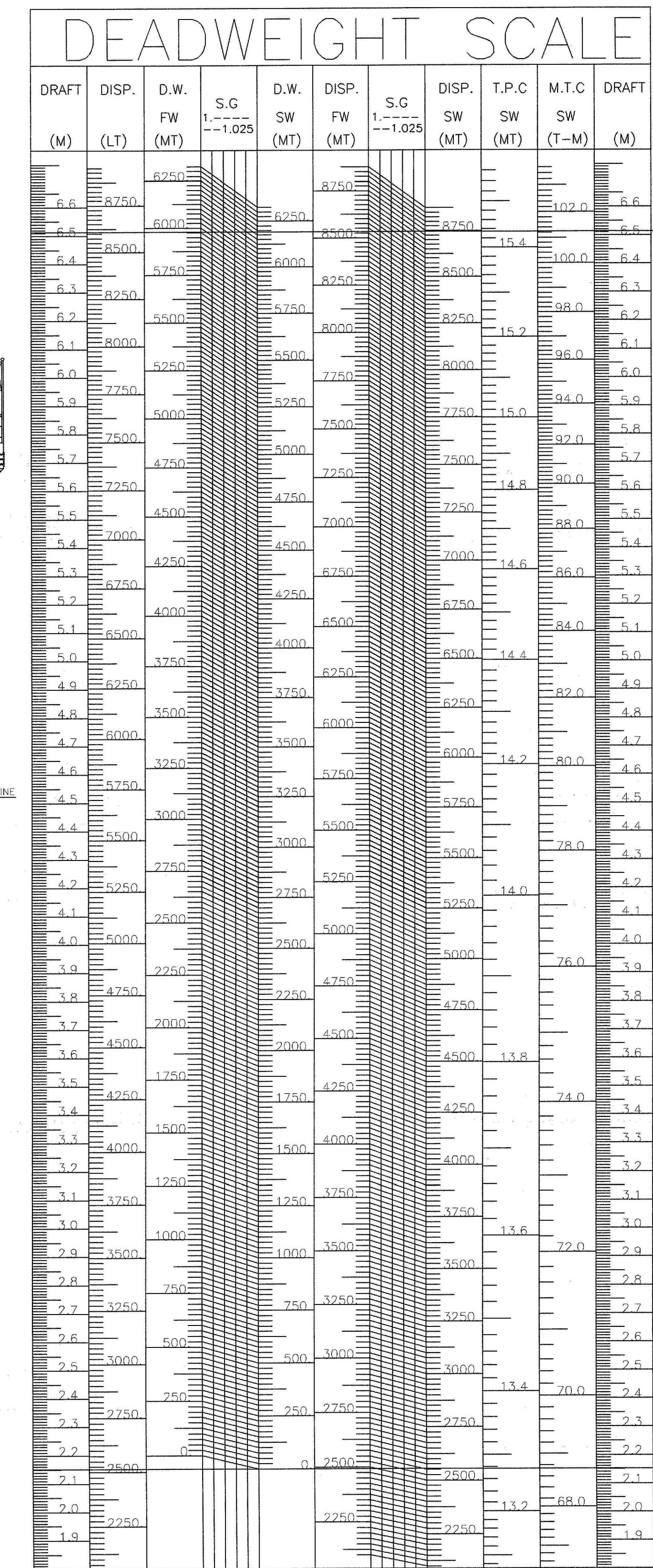
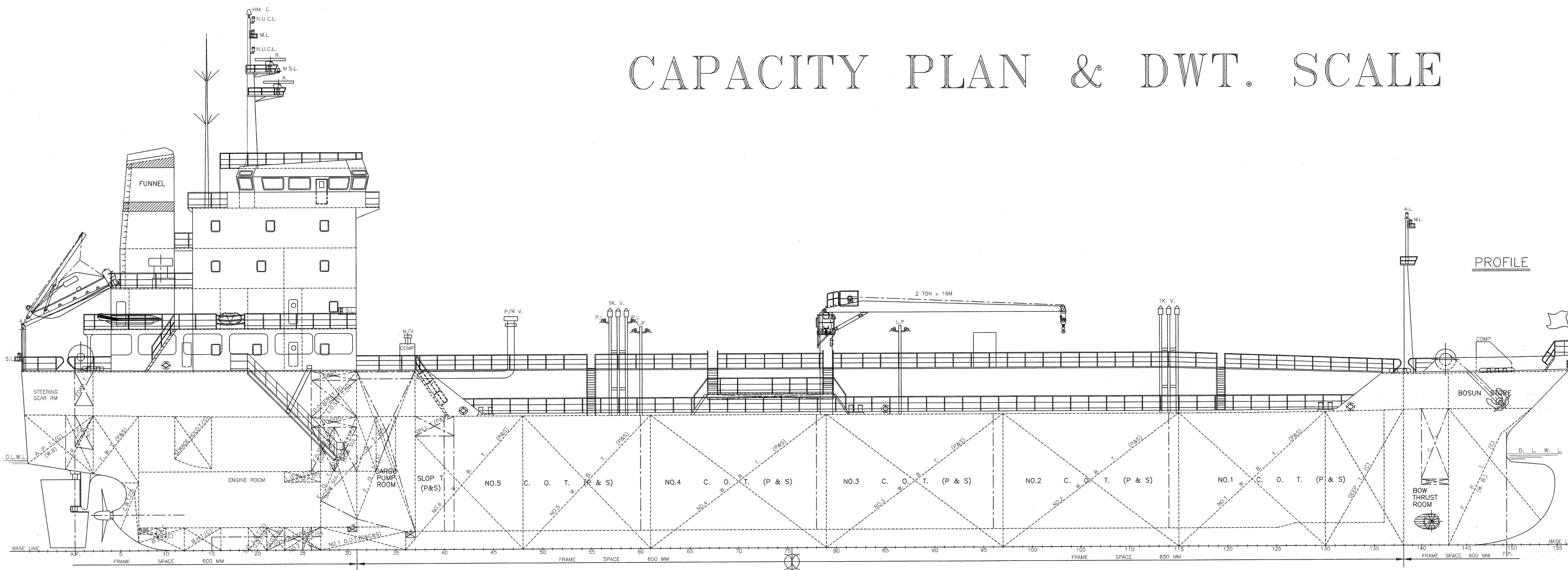
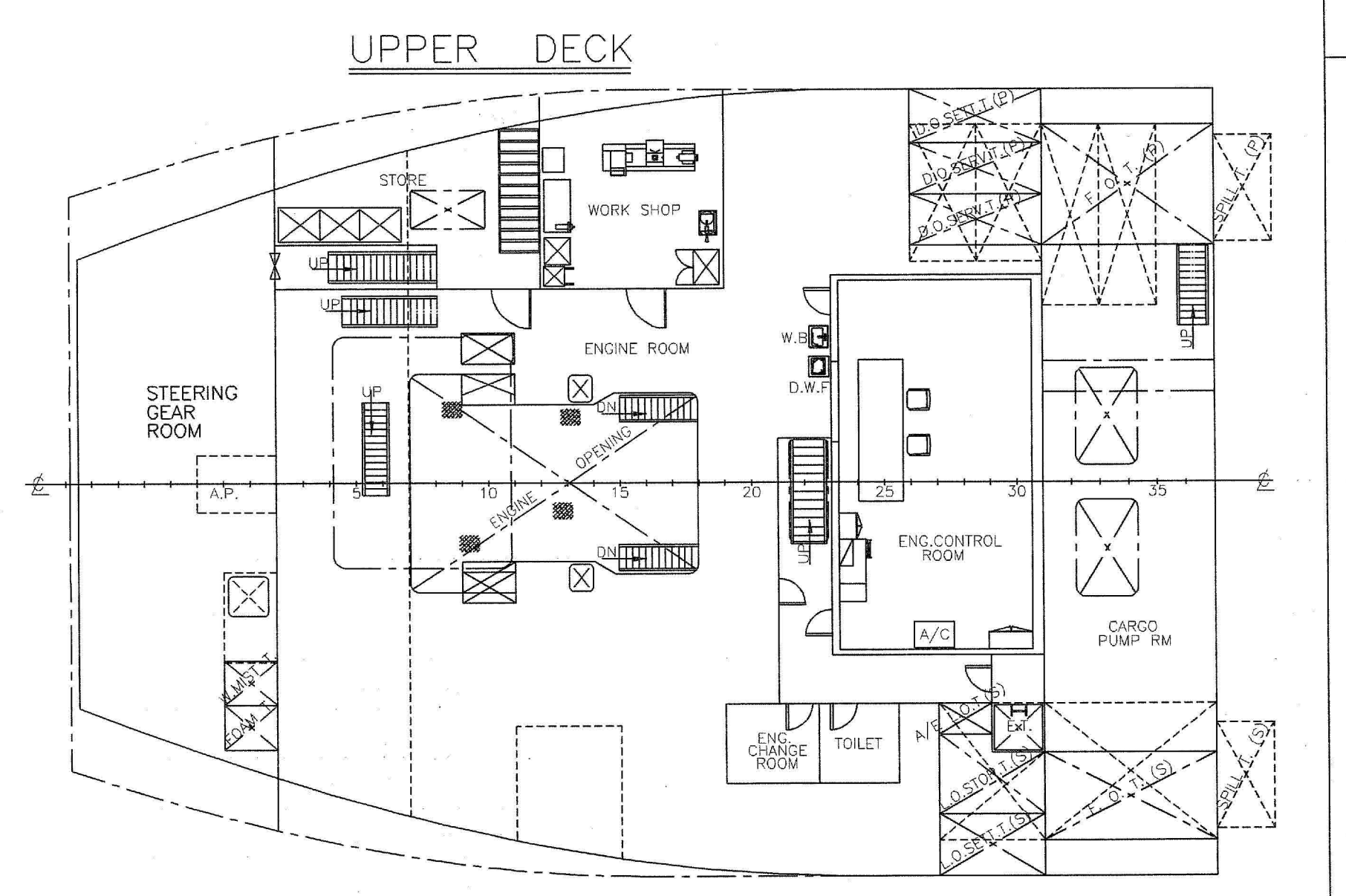
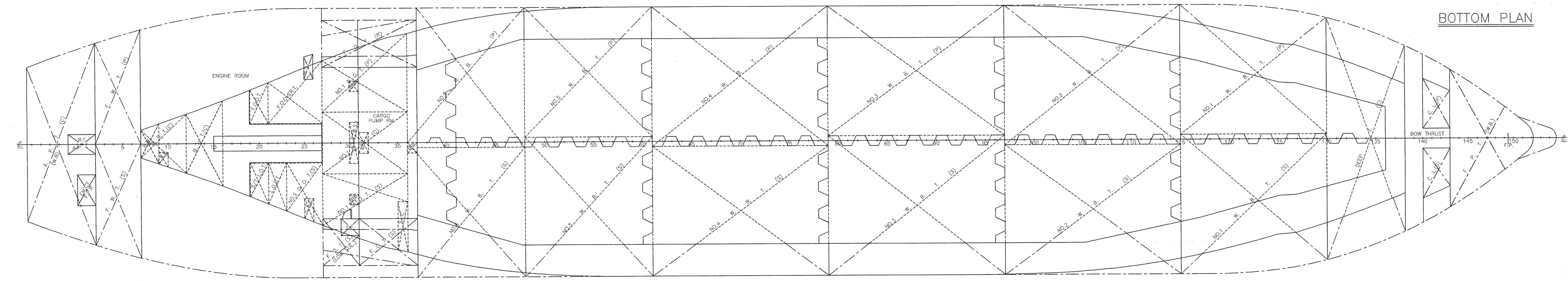
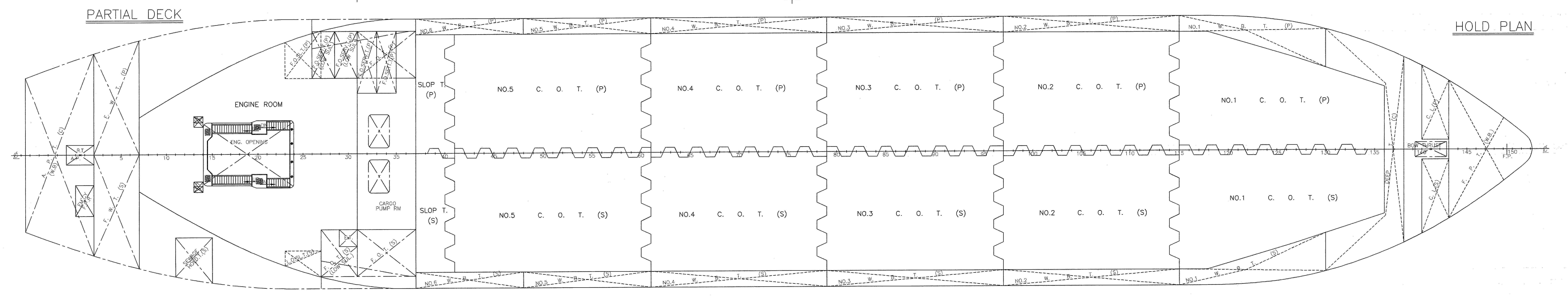


CAPACITY PLAN & DWT. SCALE

BIBLIOGRAPHY		
DATE	REV.	DESCRIPTION
2008.08.20	1.	DESIGNED BY BASIC DESIGN TEAM.
	2.	FINAL DRAWING FOR FS-1003.



DRAFT IN SEA WATER : 2.152 M
LIGHTSHIP WEIGHT : 2554.578 M/T



PRINCIPAL DIMENSIONS

LENGTH (O.A.)	102.70 M
LENGTH (M.D.)	95.00 M
BREADTH (M.D.)	17.80 M
DEPTH (M.D.)	8.80 M
DRAFT (D.L.W.L.)	6.00 M
DRAFT (SCANTLING)	6.50 M

FUEL OIL TANKS S.G. = 0.980

COMPARTMENT	LOCATION (FRAME)	100%FULL CAPACITY (M ³)	98%FULL CAPACITY (M ³)	WEIGHT (T)	L. C. G. (M)	V. C. G. (M)
F. O. T. (P)	27 - 37	87.010	85.270	83.565	-27.059	7.042
F. O. T. (S)	31 - 37	92.970	91.111	89.289	-26.902	6.906
H.F.O.SERV. T. (P)	31 - 33	16.382	16.054	15.733	-28.242	6.731
H.F.O.SERV. T. (S)	33 - 35	17.573	17.222	16.878	-26.943	6.622
TOTAL		213.935	209.657	205.465		
F. O. T. (S)(L.SUL.)	27 - 31	26.460	25.931	25.412	-30.239	6.539
H.F.O.SERV. T. (P)(L.SUL.)	28.5-31	16.251	15.926	15.607	-29.645	7.140
H.F.O.SERV. T. (S)(L.SUL.)	26 - 28.5	15.340	15.033	14.732	-31.140	7.197
TOTAL		58.051	56.890	55.751		
GRAND TOTAL		271.986	266.547	261.216		

LUB. OIL TANKS S.G. = 0.900

COMPARTMENT	LOCATION (FRAME)	100%FULL CAPACITY (M ³)	98%FULL CAPACITY (M ³)	WEIGHT (T)	L. C. G. (M)	V. C. G. (M)
L. O. STOR. T. (S)	27 - 31	10.984	10.764	9.688	-30.179	10.393
L. O. SETT. T. (S)	27 - 31	9.847	9.650	8.685	-30.100	10.329
A/E L. O. T. (S)	27 - 29	2.389	2.341	2.107	-31.700	10.443
TOTAL		23.220	22.755	20.480		

CARGO OIL TANKS

COMPARTMENT	LOCATION (FRAME)	100%FULL CAPACITY (M ³)	98%FULL CAPACITY (M ³)	WEIGHT (T)	L. C. G. (M)	V. C. G. (M)
NO.1 C. O. T. (P)	115-136	576.782	556.426	31.539	5.392	
NO.1 C. O. T. (S)	115-136	578.508	557.138	31.539	5.392	
NO.2 C. O. T. (P)	97-115	672.532	659.081	19.464	5.153	
NO.2 C. O. T. (S)	97-115	673.200	659.736	19.464	5.153	
NO.3 C. O. T. (P)	79-97	685.789	672.073	7.825	5.117	
NO.3 C. O. T. (S)	79-97	685.346	671.639	7.825	5.117	
NO.4 C. O. T. (P)	61-79	683.702	670.028	-3.875	5.117	
NO.4 C. O. T. (S)	61-79	684.022	670.342	-3.875	5.117	
NO.5 C. O. T. (P)	41-61	756.253	741.128	-16.177	5.137	
NO.5 C. O. T. (S)	41-61	752.540	737.489	-16.177	5.137	
SUB. TOTAL		6729.674	6595.080			
SLOP T. (P)	37-41	118.283	115.917	-23.842	5.194	
SLOP T. (S)	37-41	117.900	115.542	-23.842	5.194	
SUB. TOTAL		236.183	231.459			
GRAND TOTAL		6965.857	6826.539			

WATER BALLAST TANKS S.G. = 1.025

COMPARTMENT	LOCATION (FRAME)	100%FULL CAPACITY (M ³)	WEIGHT (T)	L. C. G. (M)	V. C. G. (M)
F. P. T. (C)	143-F.E.	149.987	153.737	45.801	4.873
DEEP T. (C)	130-138	270.025	276.776	38.372	4.536
NO.1 W. B. T. (P)	115-130	220.367	225.876	30.730	3.727
NO.1 W. B. T. (S)	115-130	228.357	234.066	30.733	3.619
NO.2 W. B. T. (P)	97-115	229.379	235.113	19.902	2.809
NO.2 W. B. T. (S)	97-115	220.390	225.900	19.904	2.900
NO.3 W. B. T. (P)	79-97	221.256	226.787	8.146	2.813
NO.3 W. B. T. (S)	79-97	230.245	236.001	8.146	2.727
NO.4 W. B. T. (P)	61-79	230.441	236.202	-3.550	2.725
NO.4 W. B. T. (S)	61-79	221.452	226.988	-3.550	2.811
NO.5 W. B. T. (P)	48-61	158.116	162.069	-13.599	2.836
NO.5 W. B. T. (S)	48-61	164.608	168.723	-13.600	2.747
NO.6 W. B. T. (P)	36-48	145.668	149.310	-21.607	2.803
NO.6 W. B. T. (S)	36-48	140.175	143.679	-21.614	2.889
A. P. T. (C)	AE-2	99.864	102.361	-48.232	7.687
TOTAL		2930.330	3003.588		

DIESEL OIL TANKS S.G. = 0.850

COMPARTMENT	LOCATION (FRAME)	100%FULL CAPACITY (M ³)	WEIGHT (T)	L. C. G. (M)	V. C. G. (M)	
NO.1 D. O. T. (P)	27 - 36	26.900	26.362	22.408	-28.298	0.836
NO.1 D. O. T. (S)	27 - 36	25.112	24.610	20.919	-28.463	0.839
NO.1 D. O. T. (C)	27 - 36	29.440	28.851	24.523	-28.473	0.737
NO.2 D. O. T. (S)	23 - 27	9.309	9.123	7.755	-32.459	0.840
D.O.SETT. T. (P)	26 - 31	8.770	8.595	7.306	-30.400	10.043
NO.1 D.O.SERV.T.(P)	26 - 31	7.827	7.670	6.520	-30.400	10.098
NO.2 D.O.SERV.T.(P)	26 - 31	8.136	7.973	6.777	-30.400	10.053
TOTAL		115.494	113.184	96.208		

OTHER TANKS

COMPARTMENT	LOCATION (FRAME)	100%FULL CAPACITY (M ³)	98%FULL CAPACITY (M ³)	WEIGHT (T)	L. C. G. (M)	V. C. G. (M)
F. O. D. T. (P)	19 - 21	3.153	3.027	-35.477	0.880	
F. O. OVER. T. (P)	21 - 27	13.780	13.229	-32.980	0.857	
F. O. SL. T. (P)	23 - 27	4.075	3.912	-32.428	4.865	
L. O. SL. T. (S)	23 - 27	1.758	1.688	-32.332	4.886	
S/T L. O. T. (S)	19 - 21	3.153	3.027	-35.477	0.880	
L. O. D. T. (S)	21 - 23	3.878	3.723	-34.261	0.866	
B. S. T. (C)	7 - 12	7.126	6.841	-41.369	0.876	
B. H. T. (C)	12 - 16	13.502	12.962	-39.012	0.853	
C. W. T. (C)	4 - 7	2.692	2.584	-43.739	2.422	
SEWAGE HOLD. T. (S)	11 - 15	13.599	13.055	-39.624	7.708	
W.MIST. T. (S)	0 - 2	3.081	2.958	-46.900	10.604	
FOMA T. (S)	0 - 2	3.052	2.930	-46.900	10.592	
SPILL T. (P)	37 - 39	3.688	3.540	-24.350	8.128	
SPILL T. (S)	37 - 39	3.688	3.540	-24.350	8.128	

FRESH WATER TANKS S.G. = 1.000

COMPARTMENT	LOCATION (FRAME)	100%FULL CAPACITY (M ³)	WEIGHT (T)	L. C. G. (M)	V. C. G. (M)
F. W. T. (P)	2 - 7	58.371	58.371	-44.726	7.373
F. W. T. (S)	2 - 7	58.371	58.371	-44.726	7.373
TOTAL		116.742	116.742		

REMARK
1. + : FORWARD FROM MIDSHIP
2. - : AFT FROM MIDSHIP

IMO 9477749

OWNER : COURTNEY FYNN SHIPPING LIMITED PROJECT NO. FS-1003

APP. BY : SUBJECT : 5500 DWT OIL PRODUCT TANKER FOR BUNKERING SERVICE

APP. BY : CAPACITY PLAN & DWT. SCALE

CHK. BY : K. D. OK

OWN. BY : SCALE : DATE : 2008.08.20 CLASS : B.V. DWG. NO. : B-104 REV. : 1

BUILDER : ZHEJIANG FANSHUN SHIPBUILDING CO., LTD.

DESIGNER : FAR EAST SHIP DESIGN & ENGINEERING CO., LTD.
111, 113, BUDOKSAN-GISTHALLY, 132-7, GANSEONG-DONG, SASANG-KU, BUSAN, KOREA

TEL : (82-51-326-8003), FAX : (82-51-320-3111), E-mail address : far east@shiptech.co.kr